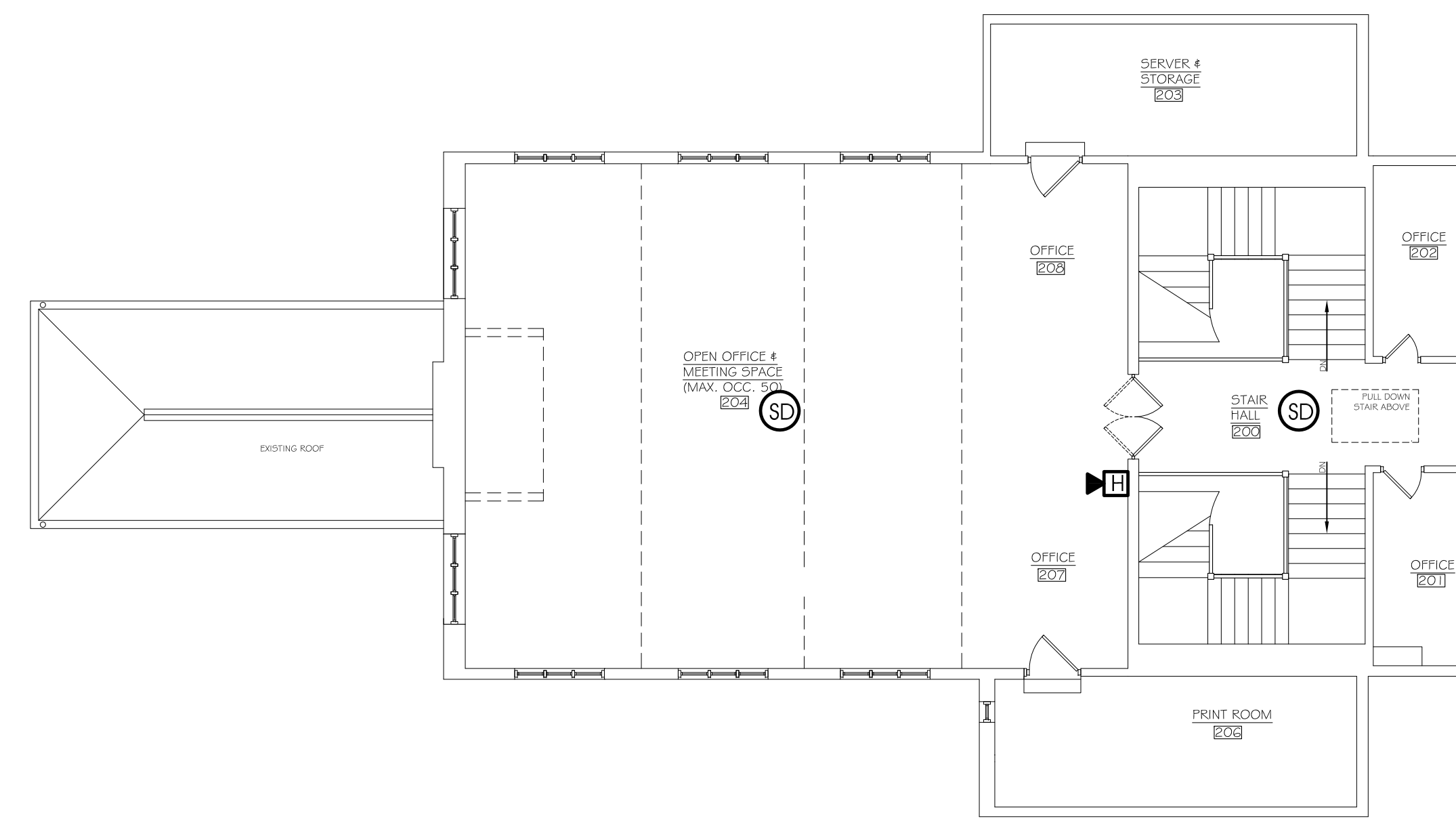
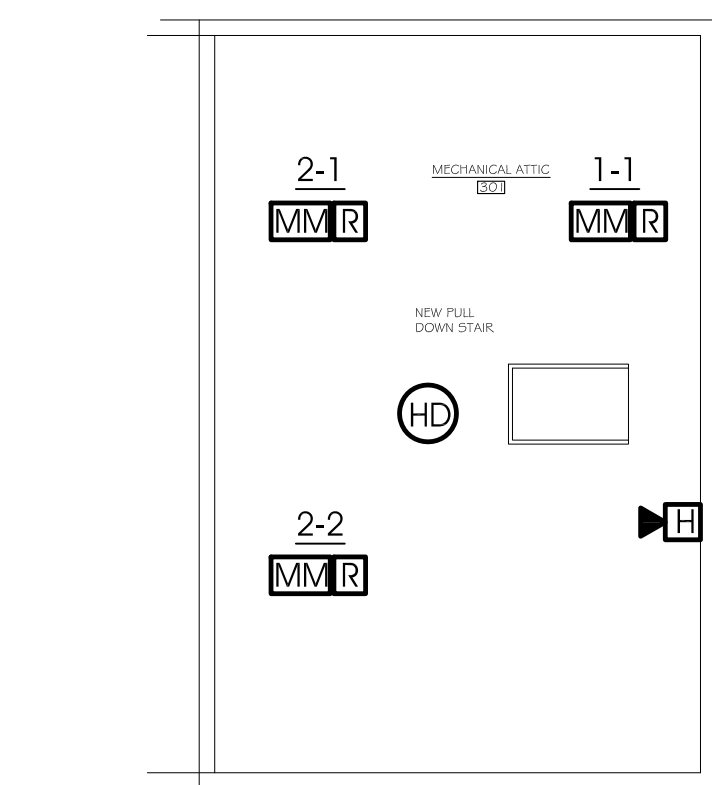


FIRST FLOOR PLAN - NEW WORK
SCALE: 1/8" = 1'-0"



SECOND FLOOR PLAN - NEW WORK
SCALE: 1/8" = 1'-0"



ATTIC FLOOR PLAN - NEW WORK
SCALE: 1/8" = 1'-0"

GENERAL NOTES

1. THE DRAWINGS ARE TO BE CONSIDERED SCHEMATIC ONLY AND DO NOT NECESSARILY SHOW THE EXACT LOCATION AND DETAILS OF THE WORK TO BE INSTALLED. THE CONTRACTOR SHALL VERIFY ALL DIMENSIONS, CLEARANCES, ELEVATIONS, PIPING AND DUCTWORK SIZES AND LOCATIONS IN THE FIELD.
2. DRAWINGS PROVIDED ARE NOT TO BE SCALED AND ARE PROVIDED FOR REFERENCE ONLY. VERIFY ALL DIMENSIONS IN FIELD.
3. ALL WORK SHALL BE INSTALLED PER ALL REQUIREMENTS OF THE BUILDING CODE AND LOCAL ORDINANCES.
4. CONTRACTOR TO COMPLY WITH ALL DRAWINGS AND SPECIFICATION DOCUMENTS.
5. WHERE EQUIPMENT DATA IS NOT SHOWN ON PLANS OR DRAWING SCHEDULES, REFER TO SPECIFICATIONS
6. ALL EQUIPMENT SHALL BE SELECTED TO FIT IN AVAILABLE SPACE.
7. WALL MOUNTED EQUIPMENT SHALL BE SURFACE MOUNTED IN UNFINISHED AREAS AND FLUSH MOUNTED IN FINISHED AREAS.
8. FOR EXACT LOCATIONS, CONNECTIONS, ROUGHING-IN OF CONDUITS AND ELECTRICAL ITEMS, COORDINATE WITH EXISTING FIELD CONDITIONS.
9. ALL FIRE SMOKE ALARM DETECTION EQUIPMENT, DEVICES, BRANCH CIRCUITING, ETC., SHALL BE INSTALLED IN ACCORDANCE WITH ALL APPLICABLE CODES, STANDARDS, AND ALL AUTHORITIES HAVING JURISDICTION.

INSTALLATION NOTES

1. PROVIDE NEW INTELLIGENT ADDRESSABLE FIRE ALARM SYSTEM. THE FIRST PHASE OF THE INSTALLATION IS THE DEVICES NOTED. PHASE 1 WORK IS FOR AN UNOCCUPIED BUILDING. THE BUILDING WILL NOT BE OCCUPIED UNTIL THE COMPLETION OF PHASE 2 CONSTRUCTION, WHERE ADDITIONAL FIRE ALARM DEVICES WILL BE PROVIDED AND INSTALLED.
2. NEW FIRE ALARM SYSTEM TO BE BASED ON HONEYWELL. PROVIDE SHOP DRAWINGS WITH VOLTAGE DROP CALCULATIONS, BATTERY CALCULATIONS, DEVICES, WIRE SPECIFICATIONS, ETC. ALL COMPONENTS TO BE UL LISTED & FM RATED.
3. CONCEAL ALL WIRING TO DEVICES. FISH WIRES THROUGH WALLS, CEILINGS, ETC.

SYMBOLS

	AUX. RELAY
	ADDRESSABLE INTERFACE INPUT MONITOR MODULE (SINGLE OR DUAL INPUT) PROVIDE P-TOUCH LABEL ON ALL COVERS.
	FIRE ALARM CONTROL PANEL
	WALL MOUNTED HORN/STROBE UNIT, TAP AT 1 WATT, 30 INDICATES CANDELA RATING.
	FIRE ALARM ANNUNCIATOR PANEL
	TAMPER SWITCH
	FLOW SWITCH
	SMOKE DETECTOR
	FIRE PULL STATION
CB	CIRCUIT BREAKER
CDT, C	CONDUIT
C.O.T.	CENTRAL OFFICE TRANSMITTER
GND, G	GROUND
1P, 3P	1 POLE, 3 POLE

1. FIRE AND SMOKE ALARM SYSTEM (FSAS) TECHNICAL SPECIFICATIONS.

- A. General
- 1) Provide all labor, materials, equipment and services, and perform all operations required for complete installation of the new Fire and Smoke Detection System in the building. Work shall be installed under the supervision of the system manufacturer or by a qualified specialty Subcontractor representing the manufacturer who shall prepare all wiring diagrams for the installation.
 - 2) Provide new intelligent addressable fire and smoke detection system. Provide all new wiring, devices and panel to provide a complete and operable system. Provide heads and panels complete with all wiring as indicated. Provide all, but not limited to new speakers/strobes, strobes, indicators and detectors.
 - 3) Submit completed wiring diagrams showing new system.
 - 4) Provide new floor plans noting each device with manufacturer's name.
 - 5) Provide HVAC tie-ins to shut down AC units and supply & exhaust fans. Relays to be in NEMA 1 box painted red. Division 15 to wire from relay to starter.
- B. Test
- 1) Run performance test of entire system to demonstrate conformance with contract requirements.
 - 2) Manufacturer to certify in writing that system conforms with all requirements.
 - 3) After completion of the system installation, the FSAS Contractor shall regulate and adjust system and placed it in complete operating condition subject to the review of the Owner. Complete instructions shall be given to the operating personnel, and training periods (min. 4 hours) scheduled.
- C. Provide shop drawings. Submission of information shall include individual data sheets with complete technical and installation information for each component plus complete coordinated wiring diagrams.

2. FIRE AND SMOKE ALARM SYSTEM (FSAS) TECHNICAL SPECIFICATIONS

- A. Scope of Work
1. This Specification outlines the requirements for a new addressable automatic fire detection and alarm system.
 2. The Contractor shall furnish and install complete and ready for operation, an addressable automatic fire detection and alarm system, including control panels, detectors, alarm devices, wiring, components and all appurtenances required for a complete and operable system. Coordinate and schedule installation of local municipally tie-in with Owner for automatic Fire Department notification.
 3. The automatic fire detection and alarm system shall consist of a microprocessor based main control panel, detector devices and alarm indicating appliances wired in accordance with the manufacturer's requirements and shall function as specified herein.
 4. The system shall be capable of operating both intelligent/analog and non-addressable ionization, thermal and photoelectric detection devices, manual stations, horns, and strobe units.
 5. Class "A" wiring shall be provided notification appliance (Style 7) and Alarm Initiating (Style 6) devices. All external circuits shall be listed as power limited circuits per Article 760 of The National Electrical Code.
 6. The system shall function as noted below.

B. Quality Assurance

1. This installation shall be made in accordance with the Drawings, Specifications and the following:
National Electrical Code Article 760.
National Fire Protection Association Standard 72E, 1996
Authorities having Jurisdiction including the New York State Uniform Fire Prevention & Building Code and the Rockland County Uniform Fire Code.
2. Wiring requirements for shielding certain conductors from others or routing in separate raceways shall be as recommended by the manufacturer's documentation.
3. The system including all components shall be listed by Underwriter's Laboratories Inc., or use as a fire protective signaling system.
4. The system and components shall be supplied by one manufacturer of established reputation and experience who shall have produced similar apparatus.
5. Any equipment proposed as equal to that specified herein shall conform to the standards herein, and the manufacturer must supply proof of having produced similar equipment, now giving satisfactory service. Included in the submittal shall be a written statement from the manufacturer of the substituted equipment that it does in fact equal the features, functions and performance of the specified equipment.
6. All material and equipment shall be new and unused.
7. All individual components and composite systems shall be designed for continuous operation without undue heating or change in rated values and shall be properly fused.

C. Materials and Equipment

1. The Fire Alarm Control Panel shall provide power, annunciation, supervision and control for the detection and alarm system. The Fire Alarm Control Panel shall be modular in construction, and contain all modules necessary to operate according and with this Specification. The system shall be capable of reading and displaying the sensitivity of remote intelligent/analog detection devices. Individual intelligent/analog detection device alarm threshold shall be adjustable from the control panel. The detection system shall remain 100% operational and capable of responding to an alarm condition while in the routine maintenance mode. Intelligent/analog detection devices shall be individually identified by the system, and any quantity of intelligent/analog detection devices can be in alarm at any time up to the total number connected to the system.
2. Ground fault detection shall be provided for all circuits. Lamp test capability shall be provided to test all visual panel indicators and associated software. The control panel shall be equipped with a silence before reset feature.
3. The Fire Alarm Control Panel shall operate from a two, two wire 120 VAC supply and internal 24V backup battery. All power connections whether AC or DC shall be separately fused. Provide 24 hour battery back-up capability followed by 5 minutes of alarm. Light emitting diodes (LEDs) shall be included to indicate (green) system power, (yellow) trouble, (yellow) supervisory, (yellow) security, (red) alarm, and (red) outbites; all conditions shall also be annunciated on an alphanumeric display which will give device number and location plus diagnosis of trouble. Alarms shall override any trouble condition.
4. The Fire Alarm Control Panel shall report, by specific device number, any device removed from an intelligent/analog detection circuit and all other devices shall continue to function. The system shall automatically indicate the total quantity of alarms and of troubles which have occurred prior to reset at the control unit.
5. The Fire Alarm Control Panel enclosures shall be suitable for surface mounting. A locked door shall be provided to limit access. Provide additional bracing to support panels.

D. Alarm Initiating Devices

1. All intelligent/analog detection devices shall be capable of being intermixed on the same control panel, have integral LED, and be individually identifiable from the control panel. All detector's addresses shall be set by electronic means only, no mechanical means such as programming pins, dipswitches or rotary dials shall be used.
2. The intelligent/analog ionization products of combustion detector shall be a Cerberus Pyrotechnics Model ID-60i, dynamically supervised indicating and adjusting detector sensitivity from the control panel, as well as faulty signaling system.
3. The intelligent thermal detectors shall be of the rate compensated fixed temperature type, Cerberus Pyrotechnics Model ID-60T.

E. Manufacturers:

Pyrotechnics
Edwards
Notifier

F. Warranty

1. All equipment and systems shall be warranted by the Contractor for a period of one year following acceptance. The warranty shall include parts, labor, prompt field service, pick-up and delivery.
2. Provide one year testing and maintenance, which shall consist of:
 - a. Regularly and systematically examining all detectors, electronics and all accessories pertaining to the system.
 - b. Tests and written reports which certify that all initiating devices have been tested and which indicate the result of the inspection test as required by the authority having jurisdiction.

Phase 1

DARLINGTON SCHOOLHOUSE

For the
New York-New Jersey Trail Conference
156 Ramapo Valley Road, Mahwah, NJ 07430

COLGAN PERRY LAWLER AURELL ARCHITECTS

118 MAIN STREET
TAPPAN, NEW YORK 10983
845-680-6670 INFO@CPLARCH.COM



Arthur R. Breuer, PE, PLLC
24 North Greeley Avenue, Chappaqua, NY 10514
(Phone) 914-238-5433 (Fax) 914-238-4472
(Email) arape@arbpe.com

DATE	JUNE 14, 2010
DRAWN BY	VP
CHECKED BY	RHB
JOB NO.	ARBPE 3052
FIRE ALARM SYMBOLS, NOTES, AND FIRST, SECOND AND ATTIC FLOOR PLANS & SPECIFICATION	FA-1