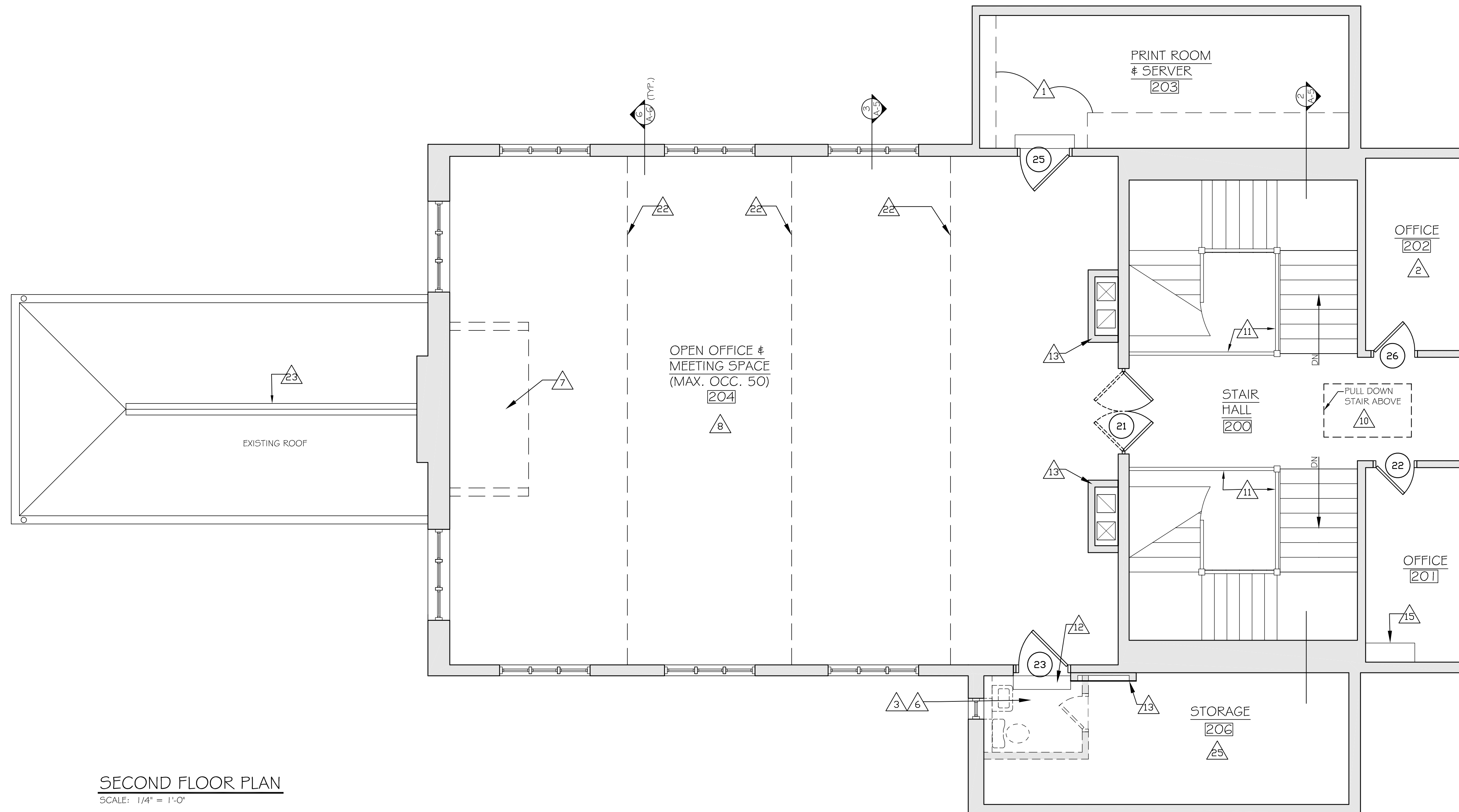


**KEYED NOTES FOR PLANS**

- 1 Remove cabinets, shelving and hanging devices.
- 2 Remove linoleum flooring (non-asbestos).
- 3 Remove asbestos-containing resilient flooring.
- 4 Remove asbestos-containing flue packing.
- 5 Remove thermostat.
- 6 Remove partition, raised floor, plumbing, and wall furring at existing toilet room.
- 7 Remove platform.
- 8 Remove deteriorated ceiling plaster and wood lath. (Assume 10% of ceiling area.)
- 9 Provide attic floor, 1 layer 3/4 inch Underlayment plywood. See Dwg A-5
- 10 Provide pull-down stair to attic with safety railing around opening.
- 11 Not used.
- 12 Replace missing step.
- 13 Frame around ducts and electric panels for Phase 2 finish
- 14 Remove and replace floor slab and tile floor.

**KEYED NOTES FOR PLANS (cont.)**

- 15 Repair open hole in subfloor.
- 16 Replace broken glass and missing muntin in cabinet door.
- 17 Construct 30" x 36" access hatch to crawi space. (See Detail (4))
- 18 Repair broken legs of benches. (Also shown on Dwg A-5)
- 19 Replace concrete platform and steps.
- 20 New wood casement window to suit opening.
- 21 New wood double-hung sash. Restore frame.
- 22 Provide steel tie rods. (See Detail (5))
- 23 Reinstall existing ridge cap.
- 24 Remove 2 by 4 blocks from floor and ceiling
- 25 Remove entire ceiling plaster and lath.
- 26 Remove deteriorated ceiling plaster and lath. (Assume 50% of ceiling area)
- 27 Fill pit with compacted soil or crushed stone.
- 28 2' x 2' concrete pad for gas meter.
- 29 Furr walls 4". Provide 3" rigid foam insulation an 1/2" type WR gypsum board.
- 30 New wood casing around door



**SECOND FLOOR PLAN**  
SCALE: 1/4" = 1'-0"

Rehabilitation of the

**DARLINGTON SCHOOLHOUSE**

600 Ramapo Valley Road, Mahwah NJ 07430

For the  
New York-New Jersey Trail Conference  
156 Ramapo Valley Road, Mahwah, NJ 07430

**COLGAN PERRY LAWLER AURELL ARCHITECTS**

118 MAIN STREET  
TAPPAN, NEW YORK 10983  
845-680-6670 INFO@CPLARCH.COM

DATE	JUNE 14, 2010
DRAWN BY	MCR
CHECKED BY	WP
JOB NO.	09160.00
<b>SECOND FLOOR PLAN</b>	<b>A-3</b>