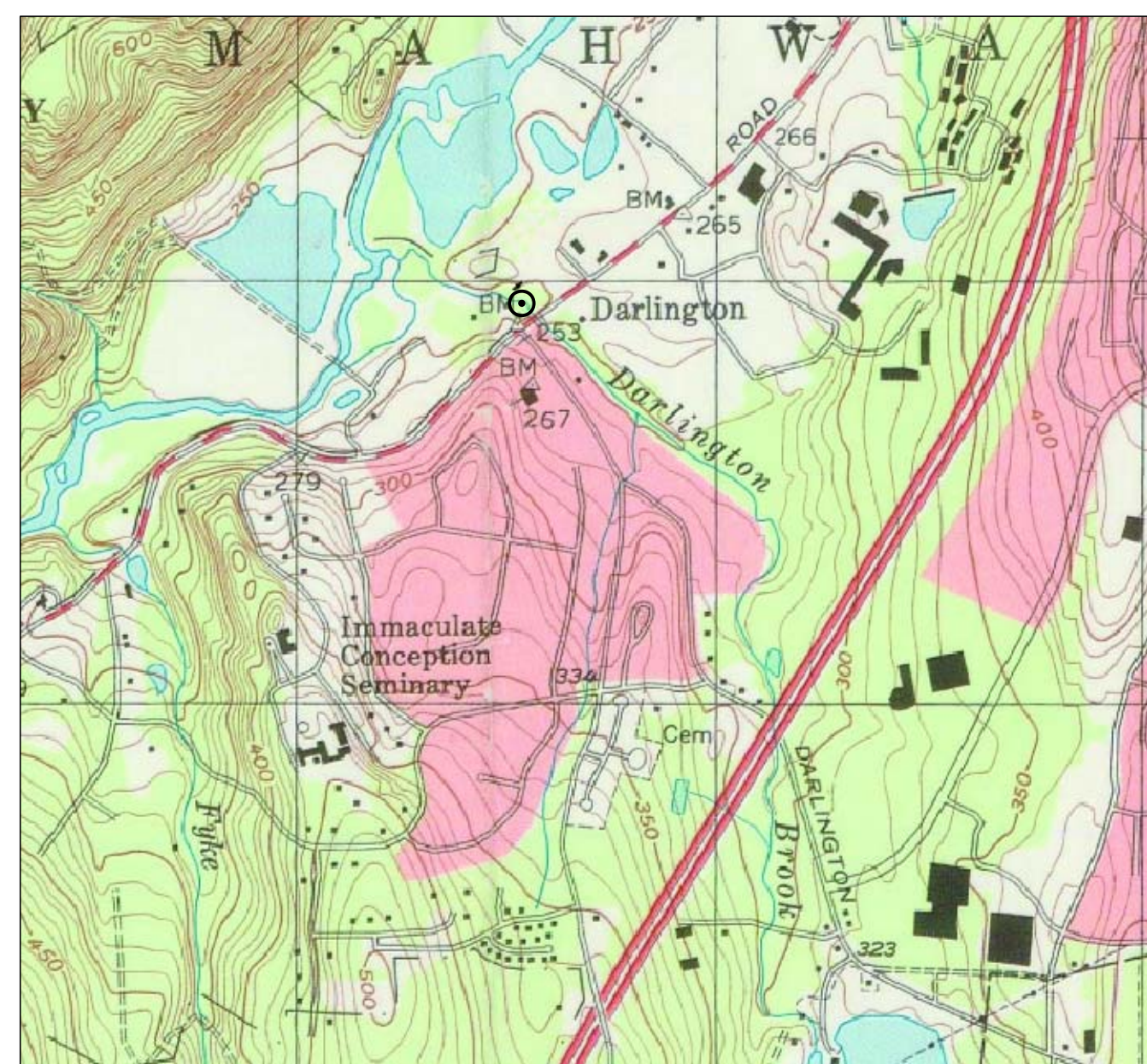


Phase 1 of
Rehabilitation of the

Darlington Schoolhouse

600 Ramapo Valley Road, Mahwah, N.J. 07430

For the
New York - New Jersey Trail Conference, Inc.
156 Ramapo Valley Road, Mahwah, N.J. 07430



Vicinity Map

LIST OF DRAWINGS

A-1	COVER SHEET	FA-1	SYMBOLS AND NOTES
DD-1	DESIGN DEVELOPMENT		
ECS	EXISTING CONDITIONS SURVEY	FP-1	SYMBOLS, NOTES AND SCHEDULES
A-2	FIRST FLOOR PLAN	FP-2	CRAWL SPACE PLAN
A-3	SECOND FLOOR PLAN	FP-3	FIRST FLOOR PLAN - NEW WORK
A-4	EXTERIOR VIEWS	FP-4	SECOND FLOOR PLAN - NEW WORK
A-5	DETAILS AND MISCELLANEOUS	FP-5	ATTIC FLOOR PLAN - NEW WORK
A-6	DETAILS		
E-1	SYMBOLS, NOTES AND SCHEDULES	M-1	SYMBOLS, NOTES AND DETAILS
E-2	FIRST FLOOR PLAN - DEMOLITION AND NEW WORK	M-2	FIRST FLOOR PLAN - NEW WORK
E-3	SECOND FLOOR PLAN - DEMOLITION AND NEW WORK	M-3	SECOND FLOOR PLAN - NEW WORK
E-4	ATTIC FLOOR PLAN - DEMOLITION AND NEW WORK	M-4	ATTIC FLOOR PLAN - NEW WORK



Architects: Colgan Perry Lawler Aurell, 118 Main Street, Tappan, New York 10983 T: (845) 680-6670 F: (845) 680-6667
Structural Engineer: Truss Engineering, P.C., 120 Charlotte Pl., Englewood Cliffs, New Jersey 07632 T: (201) 871-4800 F: (201) 871-8950
M/E/P/F Engineers: Arthur R. Breuer, P.E., P.C., 24 North Greeley Ave., Chappaqua, New York 10514 T: (914) 238-5433 F: (914) 238-4472

DATE: JUNE 14, 2010

DRAWING NO. **A-1**